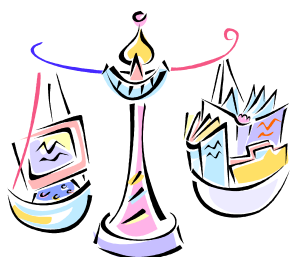


What next?

Find out if you are eligible for DSAs by visiting www.direct.gov.uk

Then if you are eligible apply using the downloadable forms on line.

There are two forms you will need to check which one you need.



“A good SpLD Tutor should help guide you through your course & the work load that comes with it!”



The Dyslexic Dyslexia Consultant

Web: www.theddc.org.uk

Phone: 01952 412937

mobile: 078 076 254 29

E-mail: info@theddc.org.uk

The Dyslexic Dyslexia Consultant
106a Holyhead Road
Ketley
Telford
Shropshire
TF1 5DJ

Disabled Students Allowance (DSAs) & Tuition



The Dyslexic Dyslexia Consultant

Tutoring tailored to the individual



Disable Student Allowance (DSAs)

What are DSAs?

DSAs are grants to help meet the extra course costs students can face as a direct result of a disability, ongoing health condition, mental health condition or specific learning difficulty. They help disabled people to study in higher education on an equal basis with other students.

They are paid on top of the standard student finance package and don't have to be paid back.

The amount you get depends on the type of extra help you need - not on your household income.

What can DSAs be used for?

They can help pay for:

- specialist equipment you need for studying - for example, computer software; Dragon naturally speaking or TextHelps Read Write

Gold, why not pick up a demo disc from the DID information Table.



- non-medical helpers, such as a note-taker or reader, or even a Specific Learning Differences Tutor like The Dyslexic Dyslexia Consultant.
- extra travel costs you have to pay because of your disability
- other costs; for example, tapes or Braille paper

Who can get DSAs?

You can apply if you are doing an undergraduate or postgraduate course (including a distance-learning course) that is:

- full-time and lasts at least one year
- part-time, lasts at least one year and doesn't take more than twice as long to complete as an equivalent full-time course



Want to find out more?

Visit www.direct.gov.uk then type 'DSAs' into the search box at the top left hand corner. Then click on :

[Disabled Students' Allowances \(DSAs\)](#)

Here you will find lots of information about DSAs, such as how to apply, the 5 steps to application and the criteria. It's a good idea to check the criteria before you apply.

If you need further advice, contact the disability adviser at your university or college.

Source
www.direct.gov.uk



If you are awarded DSA then you may be entitled to an Specific Learning Differences (SpLD) Tutor or support tutor.

Can I choose my own tutor?

Yes you can choose your own tutor.

You do not have to use the SpLD tutors that your college or university provide,

You may pay for a private tutor from your DSAs tutor allowance if you wish to, Tutors such as The Dyslexic Dyslexia Consultant. Contact detail on back page.